



# Municipality of Roseto Capo Spulico

## DOOR-TO-DOOR SEPARATE WASTE COLLECTION CALENDAR FOR HOUSEHOLDS

**GLASS**  
1ST & 3RD MONDAY EVENING  
OF THE MONTH



How to dispose:

Use commercial-type bags and place the waste in **GREEN BIN**  
Disposal time:  
from 9:00 p.m. to 12:00 p.m.

**PAPER AND CARDBOARD**  
2ND & 4TH MONDAY EVENING  
OF THE MONTH



How to dispose:

Bundle the materials and place them in the **YELLOW BIN**  
Disposal time:  
from 9:00 p.m. to 12:00 p.m.

**ORGANIC/WET WASTE**  
TUESDAY EVENING – FRIDAY EVENING –  
SUNDAY EVENING



How to dispose:

Use biodegradable bags and place the waste in the **BROWN BIN**  
Disposal time:  
from 9:00 p.m. to 12:00 p.m.

**MIXED RECYCLABLES**  
(PLASTIC – ALUMINIUM – TINPLATE)  
WEDNESDAY EVENING



How to dispose:

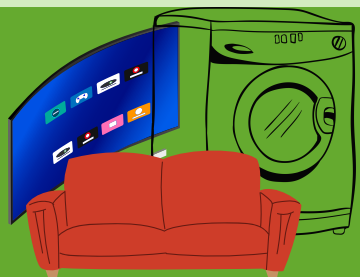
Use commercial-type bags and place the waste in the **BLUE BIN**  
Disposal time:  
from 9:00 p.m. to 12:00 p.m.

**NON-RECYCLABLE DRY WASTE**  
(GENERAL WASTE)  
THURSDAY EVENING

How to dispose:

Use commercial-type bags  
Disposal time:  
from 9:00 p.m. To 12:00 p.m.

**BULKY WASTE**  
WEDNESDAY



How to dispose:

Home collection  
upon reservation  
Tel. 0981-913341

**USED COOKING OIL**  
4TH TUESDAY EVENING OF THE MONTH



How to dispose:

Use the **WHITE CONTAINER**  
Disposal time  
from 9:00 to 12:00 p.m.

**USED CLOTHING**  
EVERY DAY



How to dispose:

Deposit items in the appropriate  
containers located  
along the streets

**Thank you for your cooperation**